

European Shippers' Council

-Representing shippers (cargo owners, transport users)

-Members are national shippers' councils, corporate members and corporate members

-Mission:

"Goods reach their destination at the right time, in a good condition, at an affordable price and last but not least in the most sustainable way"

- Supply-chain collaboration, digitization and innovation are important tools
- Advocacy/EU-funded projects



1

Who pays the bill?

- All pointers are in the right direction for combined transport:
 - Lack of drivers
 - Scarcity/high prices for energy
 - Congestion
 - Sustainability/emissions

Momentum is now!



2



Challenges ahead

- Image
- Capacity/reliability
- Bottlenecks
- Innovation



3



Importance of Ferrmed study

- Giving an well-informed insight in state of play on European rail
- Suggests innovations and practical solutions
- Clarifies necessary actions



4

Actions from member-states and Commission



Intensify actions needed for better use of present network



Take away existing bottle-necks on the rail network



Take a look at fair share of capacity between passenger and freight



Further invest in innovations like the digital train and ETA



Create a clear legal framework on combined transport



Develop green labelling for transport

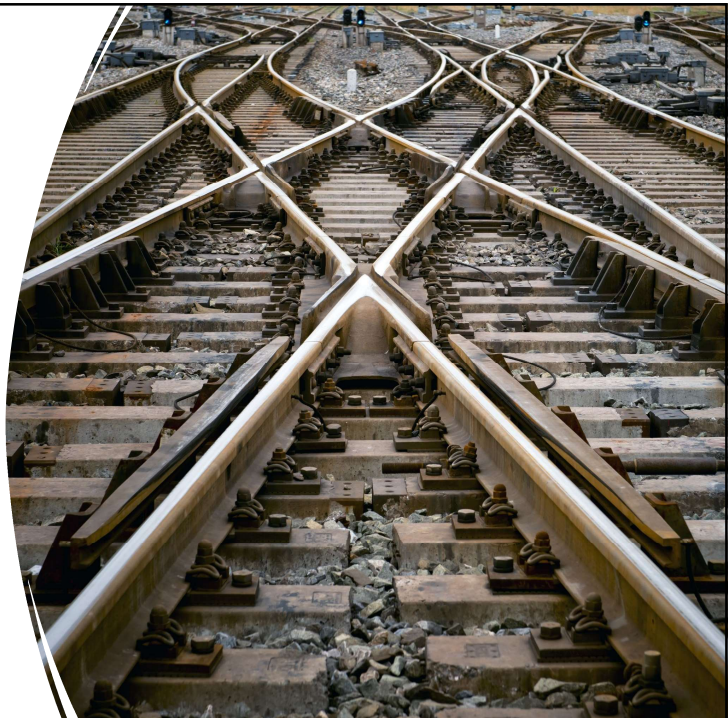


Do not start with penalizing road transport users before a standard quality and capacity has been achieved

5

Member-States

- Stop thinking from a national perspective
 - Decision-making at the EU-Council
 - Operationally
- Support a modern combined transport directive
- Use subsidies for improving the network/terminals, bottlenecks
- Acknowledge the importance of freight transport



6

Associations



- Feed policy makers with facts and requirements from a business perspective
- Share successes and best practices
- Create an atmosphere of collaboration
- Continue collaboration in bodies like the sector statement group

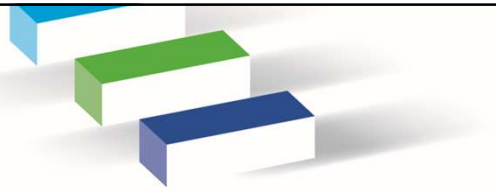
7

Answer to the question?



- Using combined transport should not feel like paying the bill by one of the stakeholders
- Quality (reliability, sustainability) should be the at the basis of the choice for a specific mode
- All stakeholders will have to work together in creating an efficient transport network which fulfills the needs of today
- In ESC you will find a partner to advising and challenging its members to use innovative transport solutions

8



ESC



Questions?

Thanks for your
attention!

Godfried Smit
g.smit@europeanshippers.eu