

North Sea Mediterranean Core Network Corridor



13:10	MINSK	EL	0645	1		
15:15	TASHKENT	B2	0862	1	141	
15:15	VIENNA	HY	7184	1	KIOSK	
15:50	PARIS/CDG	OU	5543	2	KIOSK	
15:50	LONDON	JL	5316	2	KIOSK	

Ferrmed Conference

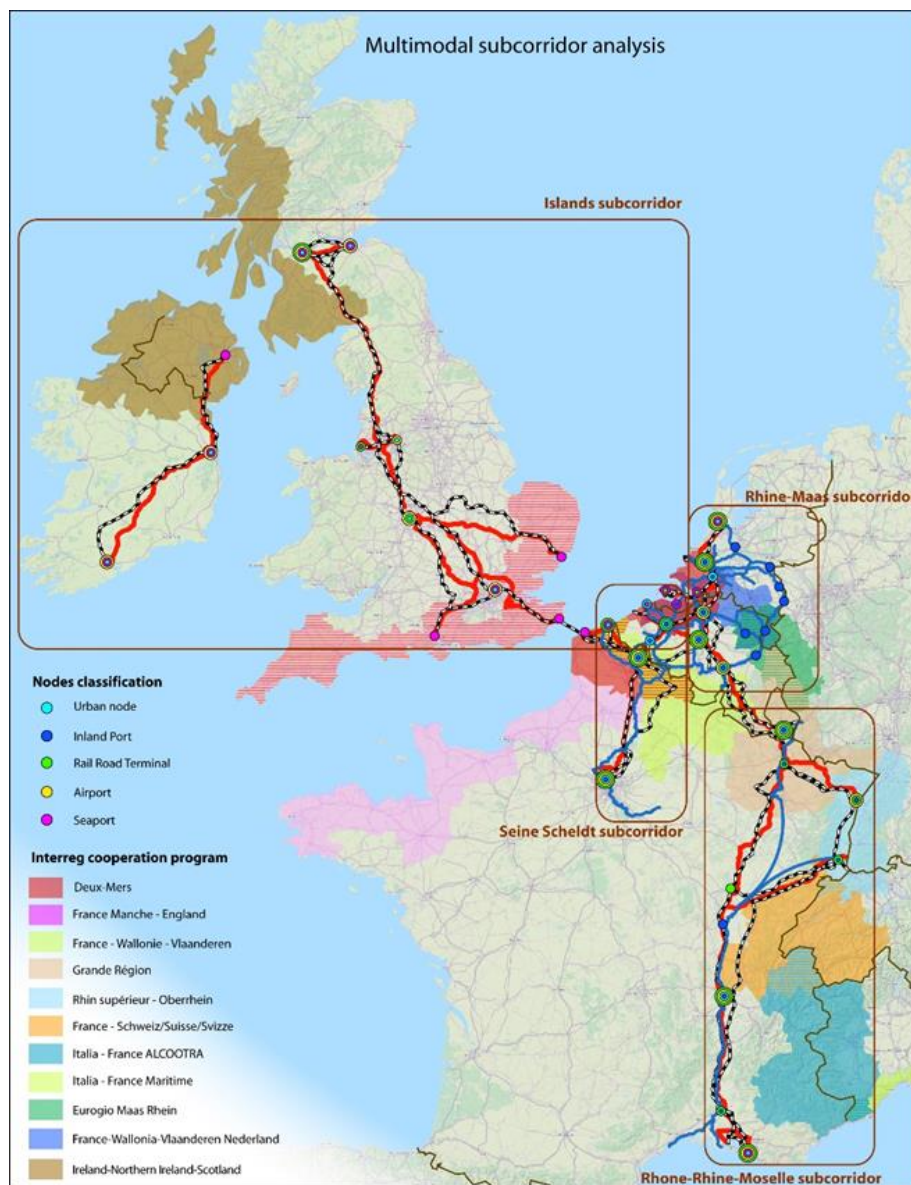
Marseille, 12 December 2017

Sean Newton (Panteia)
Antoine Martin (Stratec)

Corridor Study

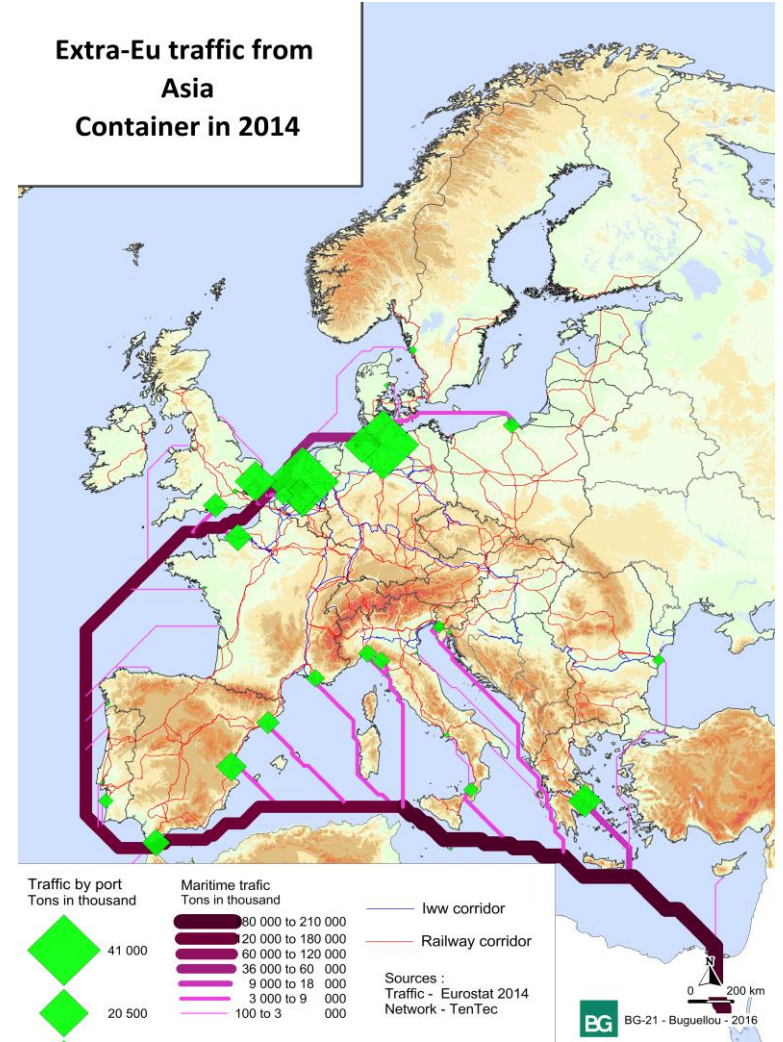
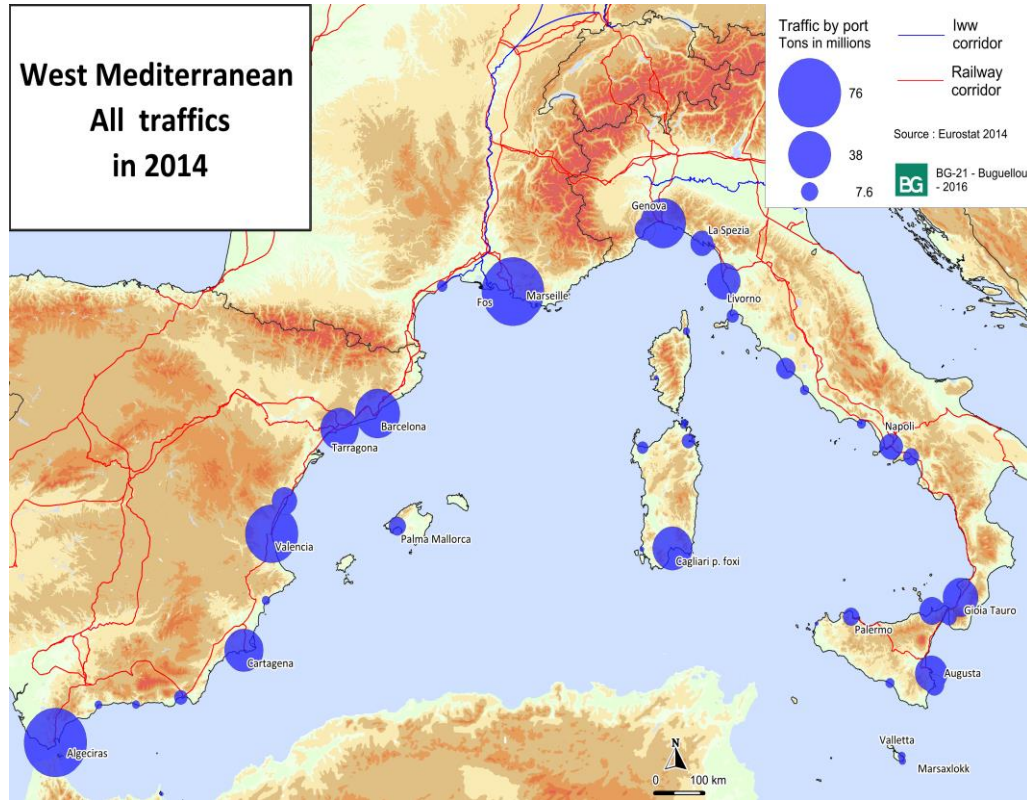
- Supporting DG-MOVE, and the European Coordinator in the development of the Corridor Work Plan.
- December 2017 – Third Work Plan
- Core Network Corridors are Multimodal Corridors
- Aim to aid economic growth, cohesion, and sustainability.
- Analysing corridor infrastructure and traffics
- Maintaining work-plan project list.

NSMED Corridor – Working Group - Regions



- Analysis of traffic and traffic potential for Rhone-Rhine-Moselle part of NSMED corridor.
- Seaports – extra-EU gateways.
- Rail as hinterland mode
- Inland waterway corridor along Rhone valley.
- Development of long-distance rail across NSMED corridor:
 - West: Iberian peninsula via MED corridor.
 - East: Via NSB corridor and the Silk Road.
- A “sub-corridor”, and a “supra-corridor”

Maritime: The Mediterranean range consists of many ports and handles all types of trafics and containers.

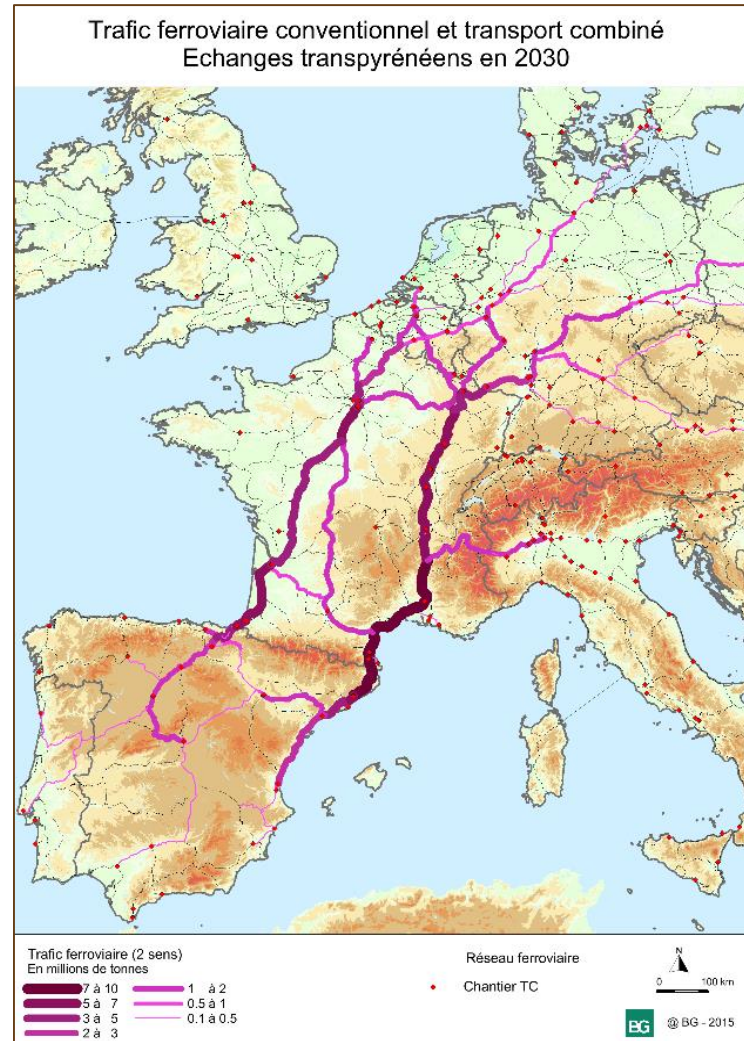
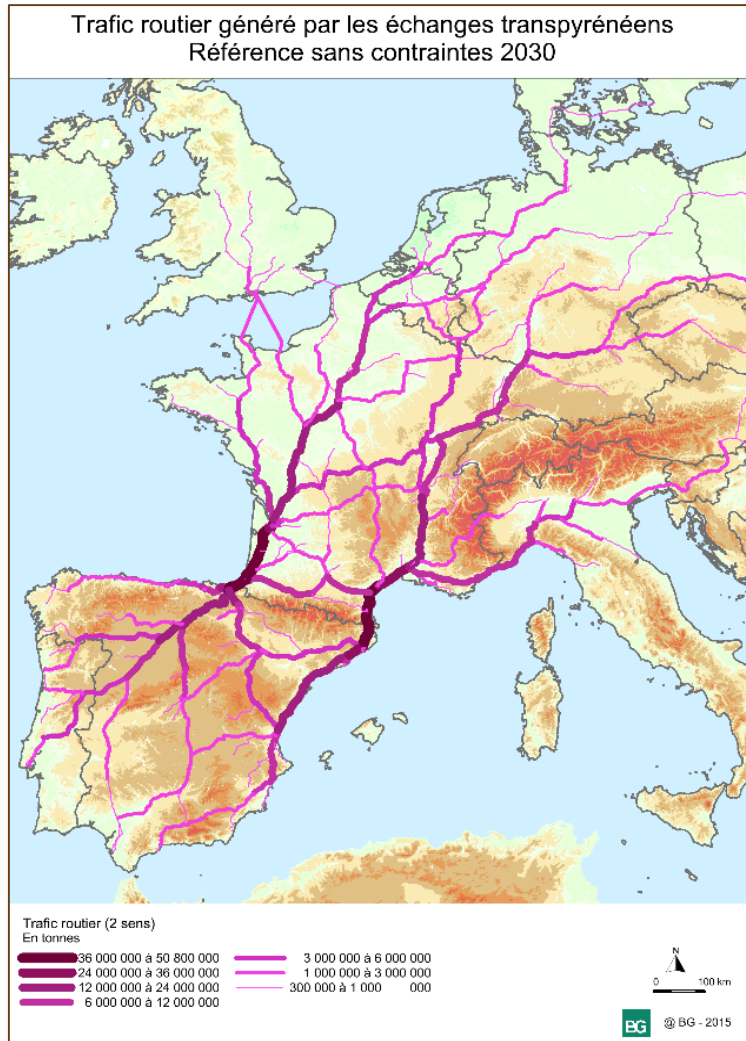


Total Container traffic in 2015

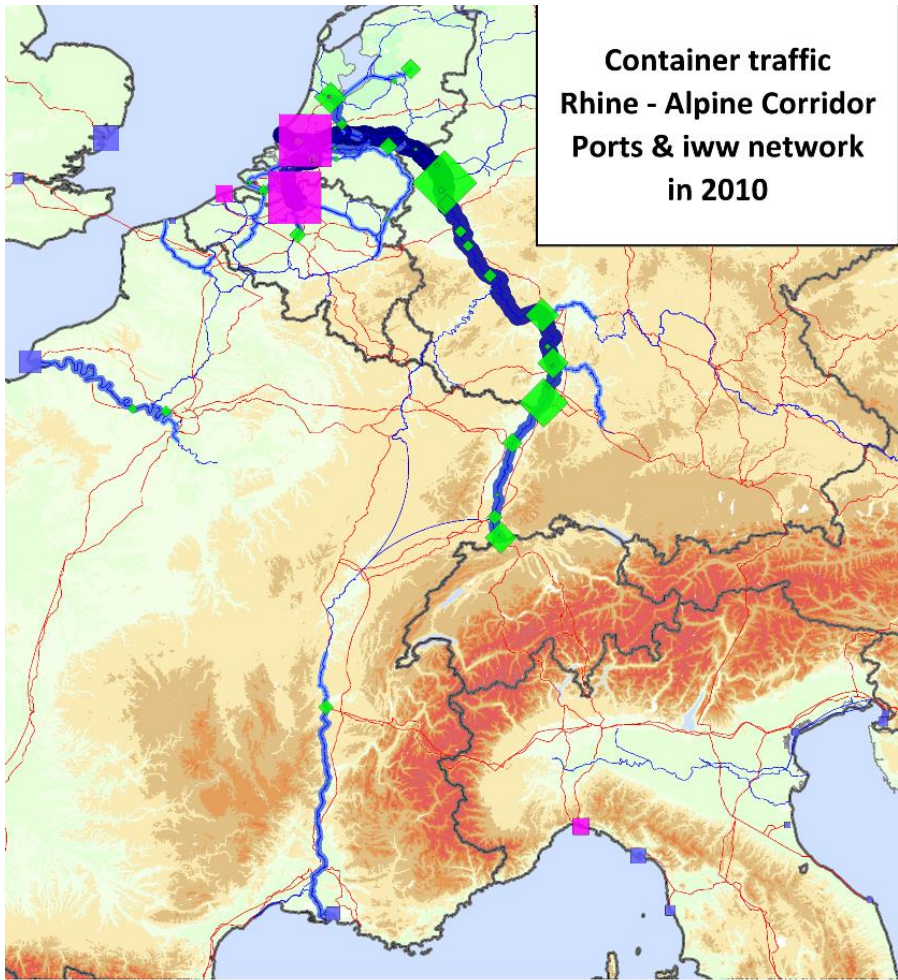
Valencia: 4.6m TEU
Algeciras: 4.5m TEU
Gioia Tauro: 3m TEU
Genoa: 2m TEU

Barcelona: 2m TEU
La Spezia: 1.6m TEU
Marseille: 1.3m TEU
(2015)

Long distance North-South itineraries : a balance between road and rail could be achieved by 2030, (Source: BG, 2015)

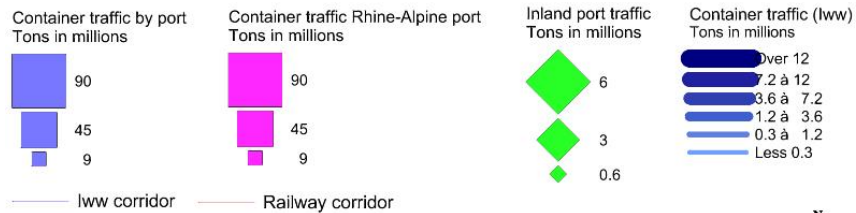


**Container traffic
Rhine - Alpine Corridor
Ports & iww network
in 2010**



Inland Waterway Transport:
Container traffic in the Rhône Valley
has capacity for increase.

(Source: BG, 2016)



— lww corridor — Railway corridor

BG BG-21 - Buguellou - 2016

Network : TenTec
Data : Eurostat - mar_go_aa
Traffic on sections & inland ports : BG modelling



Projects – overview across the corridor

May 2017 Project List
NSMED Corridor
Innovation Projects

350 projects
> €71bn

NSMED Projects

Project Category

- Airport Projects
- Innovation projects
- Waterway Projects
- Maritime and MoS Projects
- Multimodal Projects
- Rail Projects
- Road Projects

Project Costs

- 0-10 m€
- 10-50 m€
- 50-100 m€
- 100-500 m€
- 500-1000 m€
- > 1000 m€

Network

- NSMED Rail
- NSMED Road
- NSMED Waterway

Overview of 2017 Project List

Largest projects include:

- Northern Hub – UK Rail
- DART Underground - Dublin
- A24 and A1/A6/A9 Road projects in NL
- 2 Rail projects around Amsterdam
- Brussels and Antwerp ring road projects
- Seine Nord Europe Canal
- 2 rail projects in Lyon
- 2 rail projects in Marseille
- Metro Connection Orly Airport
- LGV Rhine-Rhone

Innovative Flagship Projects

- (1) **NSMED-NSBAL-ATL Flagship on Alternative Fuels**
- (2) **NSMED Flagship project on urban nodes:**
 - Provisionally:
 - Paris, Brussels, Antwerp, Belfast and Zuid Holland.
- Aiming at:
 - Multimodal freight transport in cities.
 - Access to multimodal facilities.
 - Road/Rail, Road/Water, Road/Rail/Water
- Object is to improve linkages between long-distance and urban transport.
- Defining measures to enable efficiency and sustainability gains for multi-modal freight operations.